

## Rapid Access Port – R.A.P - Contained Access to Sealed Vessels

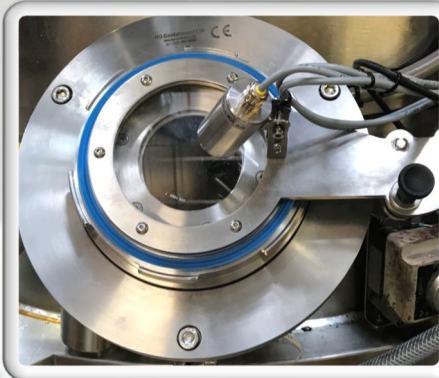
- ◆ **Contained Access**
- ◆ **Charging**
- ◆ **Sampling / Offloading**
- ◆ **Pressure / Vacuum**
- ◆ **PED Fluid 1 Cat IV**
- ◆ **Interlocked**
- ◆ **100, 150 & 200mm sizes**
- ◆ **Sight Glass**
- ◆ **316ss, C22, PTFE, HDPE**
- ◆ **Safety Key Interlock**



RAP Glovebag



Quick Contained Access



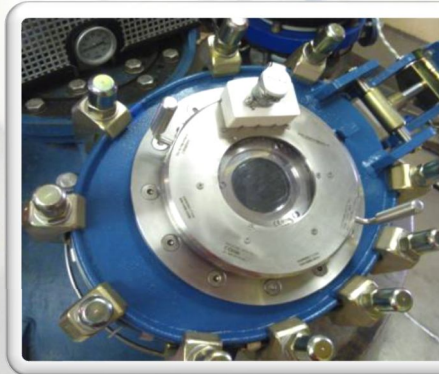
With Coded Proxy Sensor & LED



With Key Exchange Interlock



Inspection Lamp & proximity sensor



Full Vacuum / +6Barg



Dust Caps / GMP caps



6 Barg & Safety Keylocks

